



**Greenlife**  
CROP PROTECTION AFRICA

# TECHNICAL DATA SHEET

**Tower Extreme<sup>®</sup>**  
680 WG

Your Growth, Our Growth





## TOWER EXTREME® 680 WG

### PRODUCT OVERVIEW

Unique combination of synergetic active ingredient that offers high systemicity and protectant mode of action for foliar spray and soil application against wide range of diseases on agricultural crops.

### ACTIVE INGREDIENT

**Mancozeb 640 g/kg + Metalaxyl-M 40 g/kg**

#### Formulation

**Water Dispersible Granules.**

#### Mode of action

##### Mancozeb

**FRAC M3, M; Multi site: Alkylenebsis (Dithiocarbamate)**

Mancozeb is a broad spectrum non-systemic fungicide with contact and protective action. It react with, and inactivates the sulphhydryl groups of amino acids and enzymes of fungal cells resulting in disruption lipid metabolism, respiration and production of ATP disrupting several biochemical processes within the fungal cell cytoplasm and mitochondria.

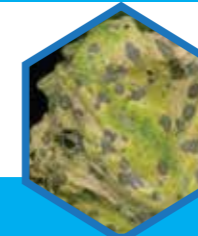
##### Metalaxyl-M

**FRAC 4, A1; Phenylamide: Acylalanine**

Metalaxyl-M is a systemic fungicide with both protective and curative action that inhibits protein synthesis in fungi by interference with the synthesis of ribosomal RNA which is rapidly taken up by the green plant part within 30 min transported upwards in the sap stream and is distributed thus provides effective control of fungi from within the plant. Metalaxyl-M control all fungi causing disease caused by air-and soil borne.



### RATE AND DIRECTION OF USE.



Target Crop	Diseases	Rate	Method of application
Roses, Carnation, Hypericum	Black spots, Downy mildew, Powdery mildew	2.5kg/ha in 1000L of water(50g/20L of water)	To achieve efficient control, TOWER EXTREME®680WG should be applied at the onset of disease. Repeat after 10 days and use at least 3 times per season.
Cucurbits (Watermelon, cucumber)	Downy mildew, Powdery mildew Anthracnose, Alternaria spot	2.5kg/ha in 1000L of water(50g/20L of water)	TOWER EXTREME®680WG should be applied before infection or on the onset of disease as preventative treatment. Repeat after 7-10 days and use maximum 3 times per season. Do not apply in windy weather or when rain is expected to occur within 1 hour. PHI: cucurbits 5 days, potatoes, tomatoes onions, french beans, snow peas, cabbages 7 days.
Potatoes, Tomatoes	Early and late blight		
French beans, Green grams, Common beans, Snow peas	Downy mildew, Powdery mildew Anthracnose, Alternaria spot	2.5kg/ha in 1000L of water(50g/20L of water)	
Bulb onions, Garlic, chives	Downy mildew, Purple blotch, Rust		
Cabbages, Broccoli, kales	Downy mildew, Black leg, black rot.		

**TOWER EXTREME® 680 WG brings you the following qualities in protection of your valuable crops**

- Strong combination of preventative and curative protection against many diseases in various crops.
- Excellent disease control under difficult conditions such as extreme climatical conditions and disease pressure.
- Longer period of disease control hence less applications thus saving cost.
- Enhanced systemic and contact activity especially on a wide range of diseases in various crops.
- Does not accumulate in the environment due to easy degradation on plant surface and soil.





#### DISCLAIMERS

**TOWER EXTREME® 680 WG** Technical Bulletin is provided for reference purposes only and is not a substitute for or an addition to a product label or Material Safety Data Sheet (MSDS). Always read and follow label directions for the country of use for registered pesticides. The information and any recommendations in this bulletin ("information") are presented in good faith; however, GCPAL makes no representations as to the completeness or accuracy of the information. The information is supplied upon the conditions that the persons receiving it will make their own determinations as to its suitability for their purposes prior to use and consult with their advisors to ensure compliance with all Government, and local regulations. In no event will GCPAL be responsible for damages of any nature whatsoever resulting from the use of or reliance upon the information.

**NO REPRESENTATIONS OR WARRANTIES, EITHER EXPRESSED OR IMPLIED, INCLUDING BUT NOT LIMITED TO WARRANTIES OF MERCHANTABILITY OR FITNESS FOR A PARTICULAR PURPOSE ARE MADE HEREUNDER WITH RESPECT TO THE INFORMATION OR THE PRODUCTS TO WHICH THE INFORMATION REFERS.**